

MAIN FEATURES

- High chemical resistance
- Electrically conductive
- High resistance to weathering
- Good thermal stability

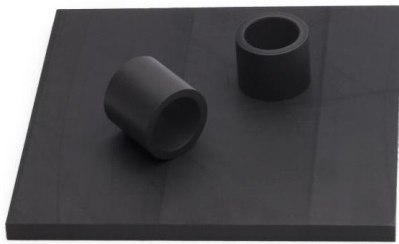
COLOUR Black

PROPERTIES

	Typical value	Units	Test method
DENSITY	2.10 – 2.14	g/cm ³	ASTM D1457 DIN 53479
WATER ABSORPTION (MAX.)	0.015	%	ASTM D-570
HARDNESS	62 - 64	Shore D	ASTM D2240

MECHANICAL PROPERTIES

	Typical value	Units	Test method
TENSILE STRENGTH	12 - 20	N/mm ²	ASTM D1457 DIN 53455
ELONGATION AT BREAK	110 - 250	%	ASTM D1457 DIN 53455
IMPACT STRENGTH	0.75 – 0.95	J/cm	ASTM D256
COMPRESSIVE STRENGTH WITH 1% DEFORMATION	7.2	N/mm ²	ASTM D695
DEFORMATION UNDER LOAD AT AMBIENT TEMPERATURE AFTER 24H AT 13,7 N/MM ²	9	%	ASTM D621
PERMANENT DEFORMATION (AS ABOVE AND AFTER 24H OF REST)	4.9	%	ASTM D621
DEFORMATION UNDER LOAD AT 260°C AFTER 24H AT 4,1 N/MM ²	12.8	%	ASTM D621
PERMANENT DEFORMATION (AS ABOVE AND AFTER 24H OF REST)	7.5	%	ASTM D621
DYNAMIC FRICTION COEFFICIENT	0.09	-	
FACTOR OF WEAR "K"	16.6	$\frac{\text{cm}^3 \times \text{min}}{\text{kg} \times \text{m} \times \text{h}} \times 10^{-8}$	
DIELECTRIC STRENGTH	Conductive	Kv/mm	ASTM D-149



THERMAL PROPERTIES

	Typical value	Units	Test method
COEFFICIENT OF LINEAR THERMAL EXPANSION (25-95°C)	12.7	$\frac{10^{-5}}{K}$	ASTM D696
CONTINUOUS SERVICE TEMPERATURE	+260	°C	ASTM D648

AVAILABLE

SEMI-FINISHED PRODUCTS

SHEETING	2 to 10 mm*
ROD	Ø 20 to Ø 80 mm*
TUBE	At request

* Other dimensions can be delivered at request.

We produce customized finished PTFE 15% carbon products according to your specifications.

This can be based on a drawing or model.

Any questions about products or make an enquiry? Simply call +31 180 46 34 71 or send us an e-mail at sales@ridderflex.nl